

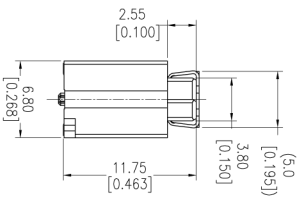
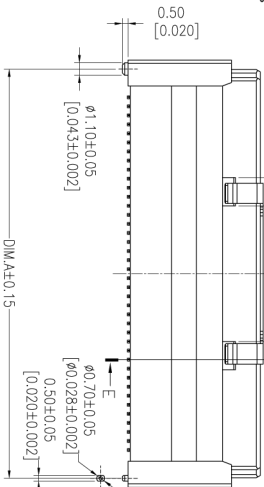
**NOTES:**

- Current Rating:0.5AMP
- Contact Resistance:30mΩ max
- Withstand Voltage:100V AC/DC
- Insulation Resistance:500MΩ min
- Operation Temperature:-40℃ to +125℃
- Contact Material:Phosphor Bronze
- Cap Material:SUS;L=0.25mm
- Housing Material:CP(U,94V-0),Nature
- Contact plating:Au and Tin over Ni
- Fatness: <80Pins The "M" is 0.12mm MAX
- >80Pins The "M" is 0.15mm MAX

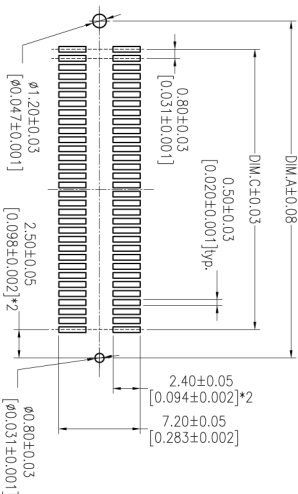
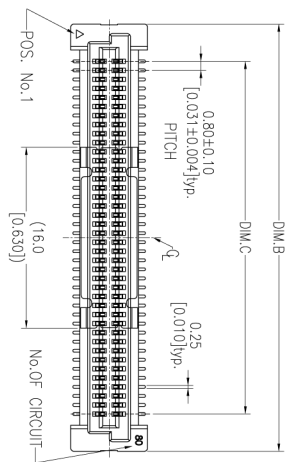
## Ordering Information

3616-S XXX - 117 XX R 01

No. of Pins Housing High Contact Plating Res-temperature CAP  
 S1-3a-Cold/Tin  
 S3-10a-Cold/Tin  
 .... Δ



79.20	85.80	84.20	200
71.20	77.80	76.20	180
63.20	69.80	68.20	160
55.20	61.80	60.20	140
47.20	53.80	52.20	120
39.20	45.80	44.20	100
31.20	37.80	36.20	80
23.20	29.80	28.20	60
15.20	21.80	20.20	40



Recommended P. C. B Layout (Top Side)  
 (PCB BOARD TOLERANCE ± 0.05)

OPERATION		DRAW		PART NO.	
XX	±0.40	All len		3616-SXXX-117XXR01	
XXX	±0.25	CHECK		TITLE: 0.80mm B TO B Form 1e	
XXX	±0.15	Angle		H=1.1.75 "M" TYPE SMT	
DIM	TOL.	APPROVE		Customer NO.	
DATE	CHANGE	DATE		PROL.	

REV	DATE	MODIFICATION DESCRIPTION	SCALE	FIT	SHEET
A1	2014/11/07	Modify	mm	1/2	1/2
A0	2014/06/24	NEW	inch	A4	1/2
1					
2					
3					
4					
5					
6					
7					
8					
9					
10					

**上海回峰电子科技有限公司**  
 Shanghai Hui Feng Electronic Technology Co., Ltd

电话: 021-67150229  
 传真: 021-67150251  
 企业邮箱: hui Feng\_dzki@163.com  
 公司网站: www.hui Feng-china.com